

Person re-identification

Yiqiang CHEN

Laboratoire d'InfoRmatique en Image et Systèmes d'information



INSA



UNIVERSITÉ
LUMIÈRE
LYON 2



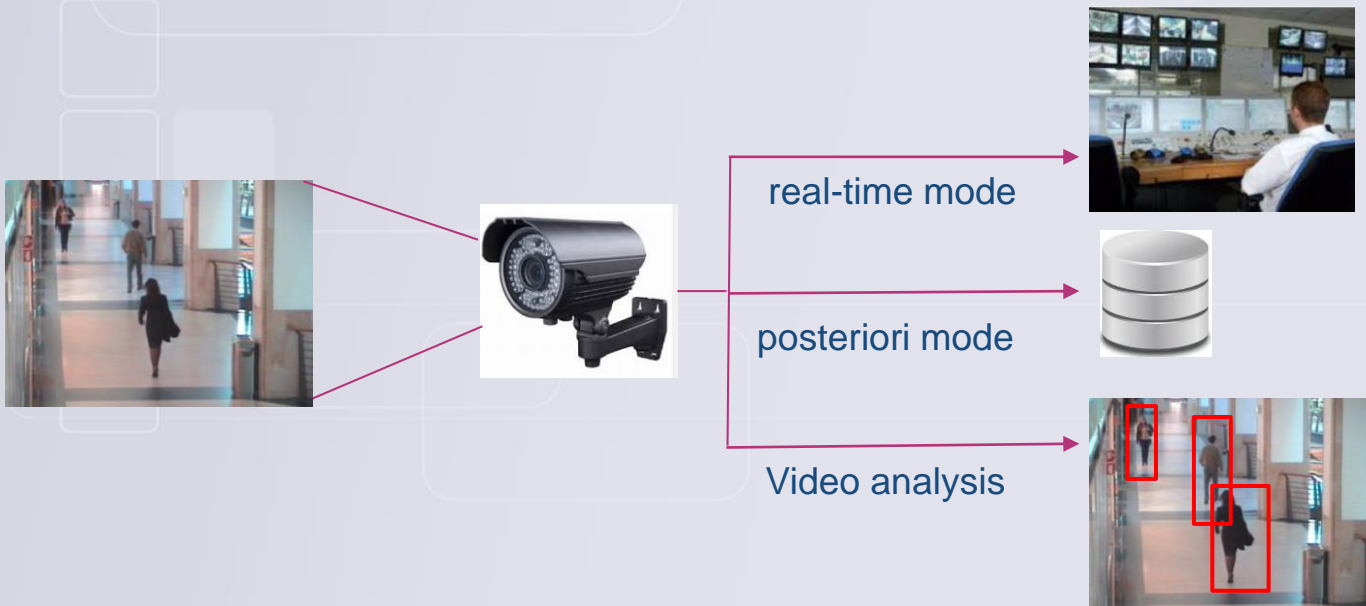
Context

- **Serious security situation: terrorist threat, crime**
- **Increasing number of video surveillance**
- **Goal of increasing public security**



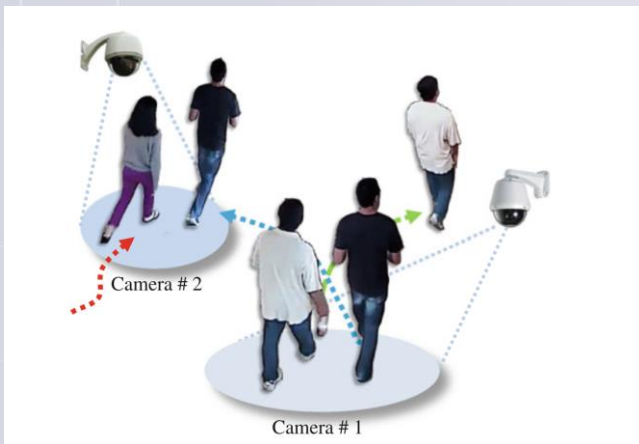
Intelligent Camera

- A large number of video generated
- Infeasible to achieve by manpower
- Demande of automatical analysis



Re-identification

- Network of non-overlapping cameras
- Match a probe person against a set of gallery persons extracted in the video of another camera



Challenges

■ Appearance variation

- Viewpoint variation
- Human pose variation
- Illumination variation



■ Low resolution

- Face recognition impossible



■ Crowded scene

- Occlusion
- Numerous candidates



Semantic context

■ Middle level features

- Semantic Attribute: properties observable in images that have human-designated name



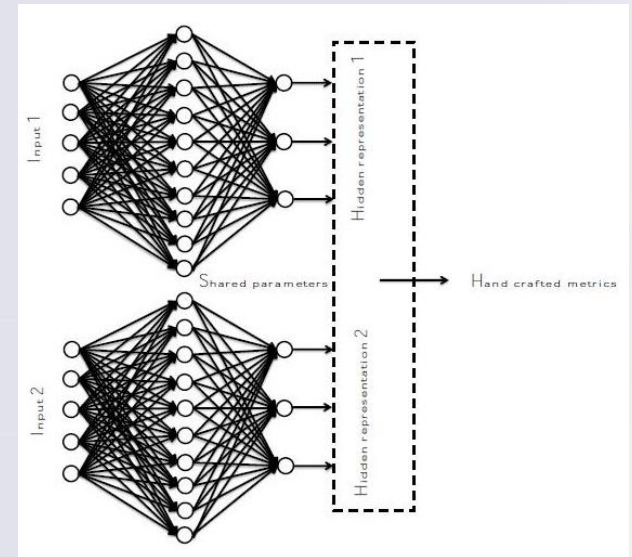
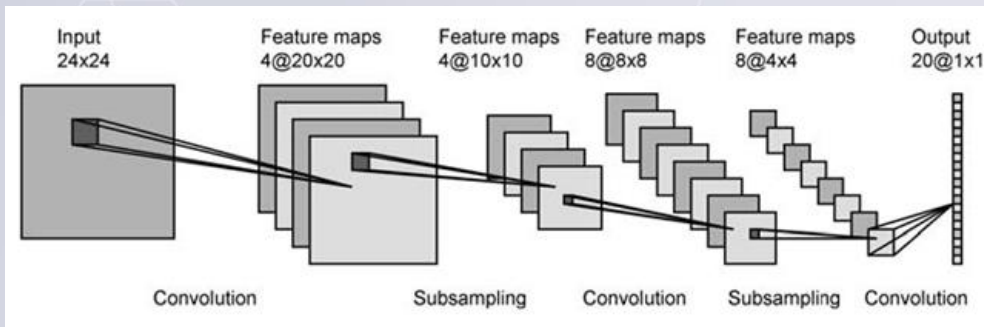
■ Group



■ Zero-shot re-identification

Deep learning

- A branch of machine learning to model high-level abstraction by multiple non-linear transformations
- Convolutional neural network
- Siamese neural network





Merci de votre attention